

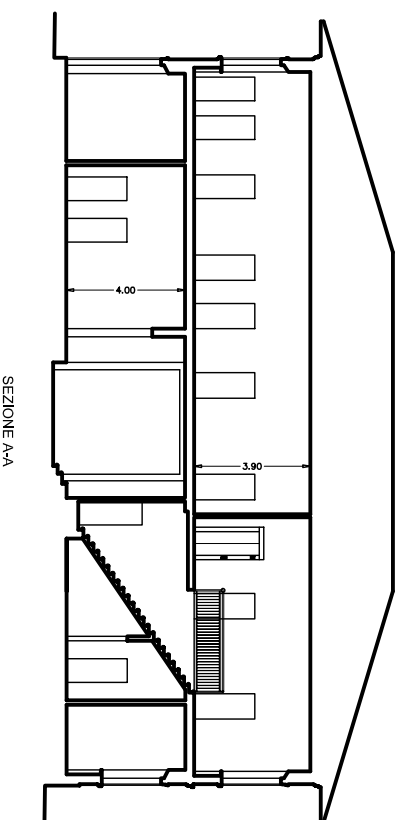
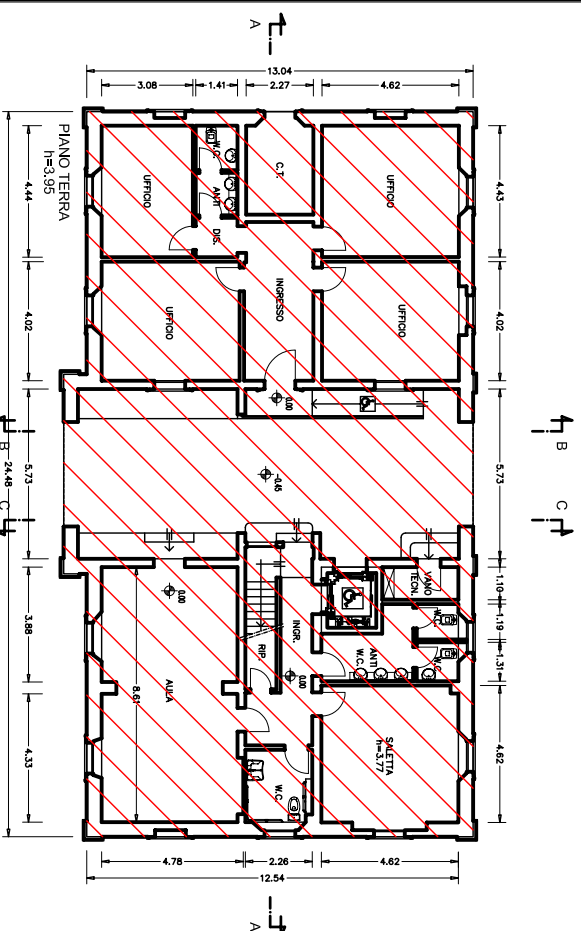
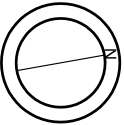
CENTRO IMPRESA E INNOVAZIONE C.I.I. Pistoia s.c.r.l.
REGIONE TOSCANA - PROVINCIA DI PISTOIA

PROGETTO PER LA RIQUALIFICAZIONE URBANISTICA ED EDILIZIA
DEL COMPLESSO INDUSTRIALE EX-SE.DI. DI CAMPOZZORO PER
LA REALIZZAZIONE DI UN POLO PRODUTTIVO POLIFUNZIONALE
INTEGRATO CON IL TERRITORIO

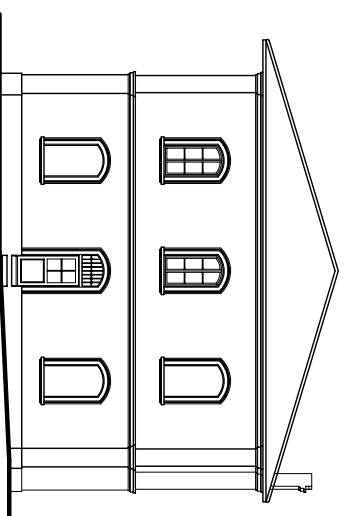
TITOLO:
EDIFICIO "C"

TAVOLA:
Edificio C
Arc 2

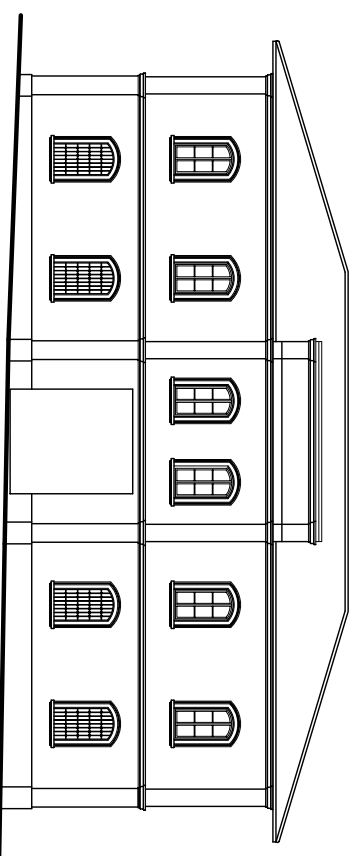
SCALA:
1:100



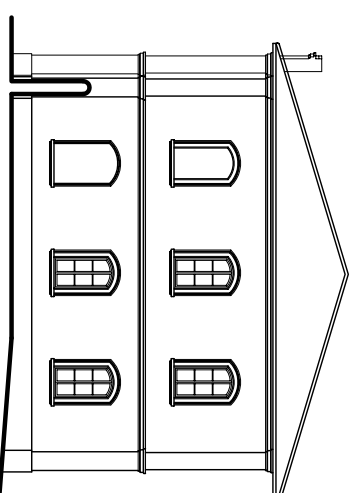
SEZIONE A-A



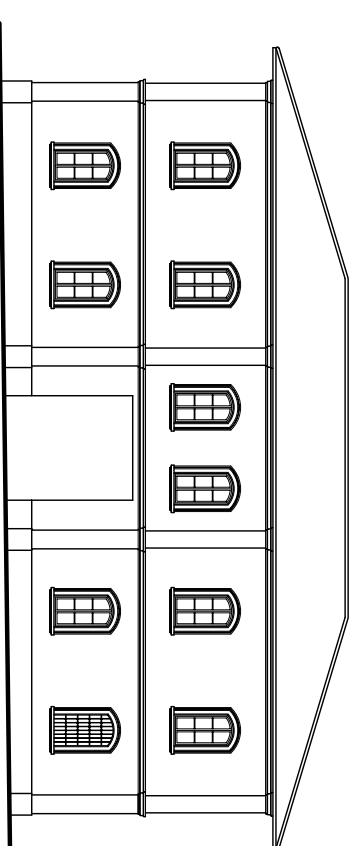
PROSPETTO OVEST



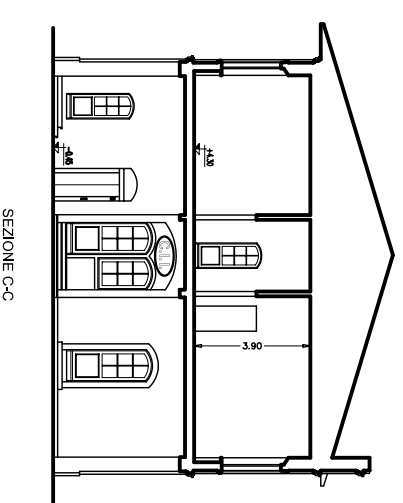
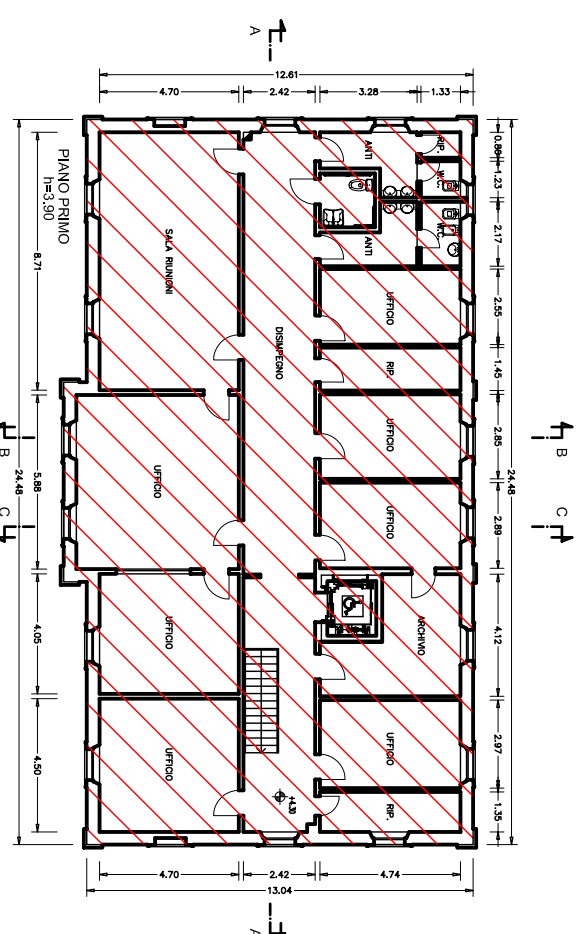
PROSPETTO SUD



PROSPETTO EST



PROSPETTO NORD



SEZIONE C-C